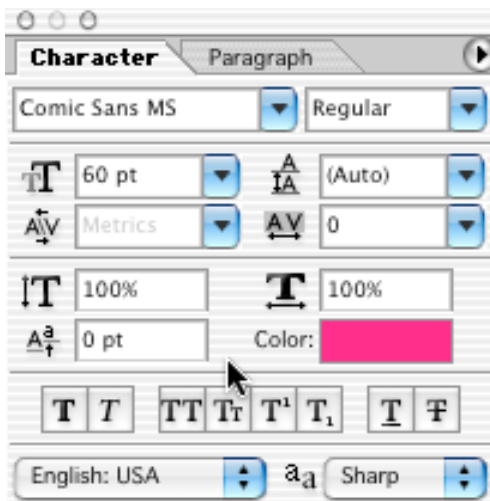
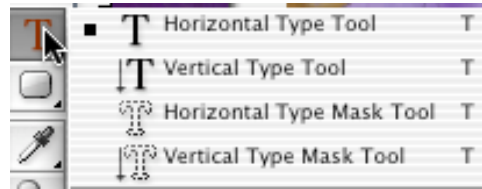


## Adobe Photoshop 7 Working with Type

### Horizontal and Vertical Type



- Select the Horizontal or Vertical Type Tool from the Toolbox.
- Select font, size, color, and style options from the Options Toolbar.
- Select text and use the Warp button to change its look.
- Use the anti-aliasing method desired. Anti-aliasing is the process of blending a graphic object with its background so it does not appear jagged. This is done through gradually changing pixel color at the edge of the graphic.
- Text is created on its own layer so Layer Styles can be applied through the Layers Menu or Palette.



- Move the type with the Move Tool.
- Transform a Type layer by selecting its layer in the Layers Palette and using Transform options from the Edit Menu.
- Edit the Type Layer text by selecting it with the Type Tool. Be sure the layer is selected in the Layers Palette. Use the Character Palette if desired (Window/Character).
- Type Layers must be rasterized in order to apply filters. Rasterizing is the process of changing a graphic from vector to bitmap. Vector

graphics are made with mathematical equations, such as  $\text{Area} = \text{height} \times \text{width}$ . Bitmap graphics are made of pixels, and can be filtered. Type cannot be edited as you would in a word processing document after it has been rasterized. When attempting to apply a filter to a Type layer, you will be asked to rasterize the Type.

### Type Masking Tools

- If you wish to create your Type on a new layer, go to the Layer Menu and select New Layer.
- Choose either the Horizontal and Vertical Type Masking tool to create a selection of text.
- After designating settings in the Options Toolbar, type in text and click on another tool in the Toolbox. Your text will appear as a selection.

- Go to Edit/Fill or Edit/Paste Into to fill your selection as desired.
- Use Gradient, Paint Brush, or Paint Bucket to fill your selection.
- Go to Edit/Stroke to apply an outline to your selection.