

Adobe Photoshop 7.0 Working with Layers

Any Photoshop document can have multiple layers. Each layer is like a transparency that can be edited without affecting the other layers. Layers can also be moved, hidden, copied, filtered, deleted and painted individually. Layer options can be found in both the Layer Menu and Layer Palette. If you do not see the Layer Palette, go to the Window Menu and select Layers. Alternatively, you can select Workspace/ Reset Palette Locations.



About the Layers Palette

The document above contains three layers. The background layer is a daisy, layer 2 is a semi-transparent gradient, and layer three is an edited photograph. The name of the background layer is always italicized. Italicized background layers cannot be altered in the same ways as other layers. However, background layers can be copied, and thus "unlocked" by going to Layer/New/Layer Via Copy, and clicking on the crossbar icon near the top of the Layers Palette. If desired, the old background can be discarded by dragging it to the trash in the Layers Palette.

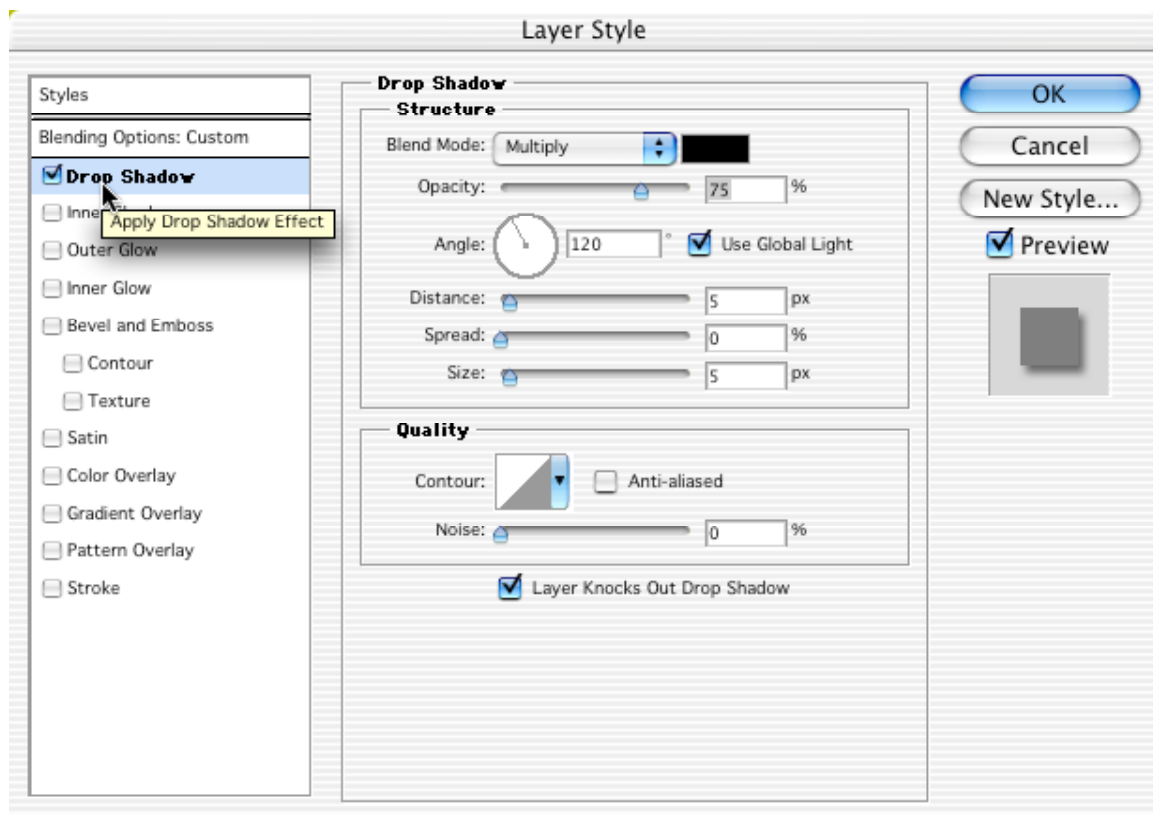
Layer Techniques:

- Delete a Layer by dragging it to the Garbage Can in the bottom right of the Layers Palette.
- Copy a Layer by selecting it and clicking on the New Layer button to the left of the Garbage Can in the Layers Palette.
- Hide a Layer by clicking on the eyeball to its left.
- Rename a layer by double clicking on the layer name in the Layers Palette.

- Move a layer by dragging it up or down in the Layers Palette.
- Lock transparent or opaque pixels, position, or all properties using the Lock icons near the top of the Layers Palette.
- Change the transparency of a layer by setting the Opacity levels in the Layers Palette.
- Change the way a layer blends with layers underneath via the drop down Blending Mode Options next to the Opacity setting in the Layers Palette.
- Double click on a Layer icon to set Layer Styles, or change them with the Layer Styles button on the bottom of the Layers Palette.

Layer Styles

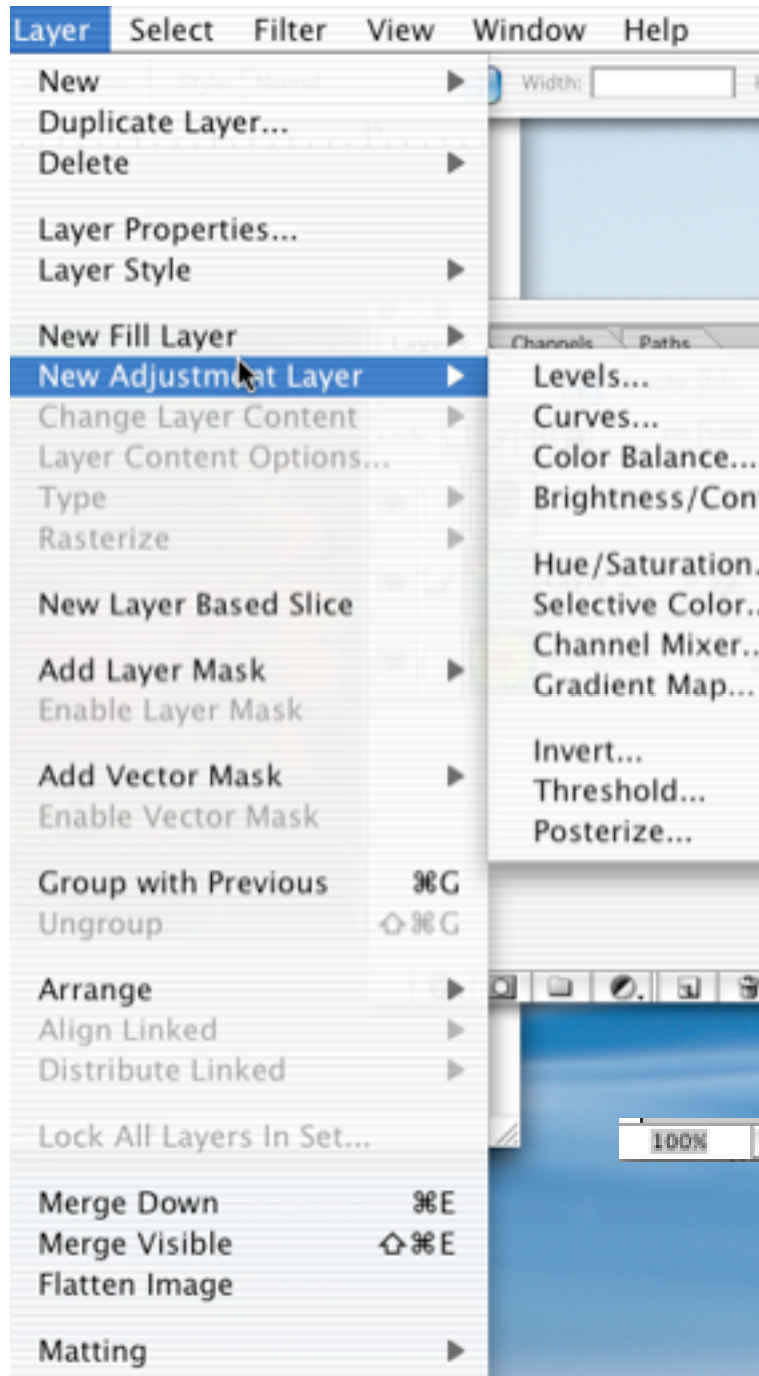
Double clicking on the layer's icon in the Layers Palette brings up the Layer Style dialog box. Clicking on a checkbox will apply the style, and clicking on the style name will offer more options.



Layers and selections can be dragged from document to document using the move tool!

Layer Menu

The Layer Menu allows alternative ways to work with layers.



- Layer Properties offer another way to name layers.
- Layer Style opens the Layer Style dialog box.
- Adjustment and Fill Layers allow the look of selected layers to be altered by adding a layer above.
- Arrange allows layer order changes.
- Merge Down, Visible, and Flatten are ways to merge layers together. Not only does this allow different layers to be used together, but it also decreases document size. Use it with caution. Once a document has been saved and closed, merged layers cannot be separated.

Entire layers can be transformed in the same way that selections can. Go to Edit/Transform and select a transformation option. Transform the layer and hit return to apply the transformation.