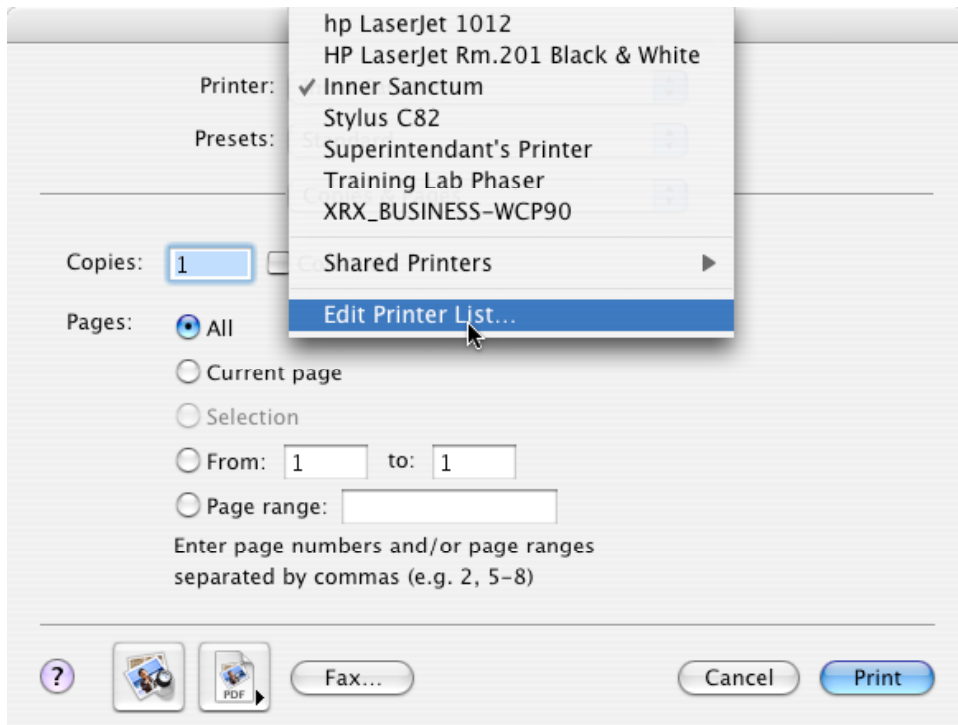


## Adding Printers X.3

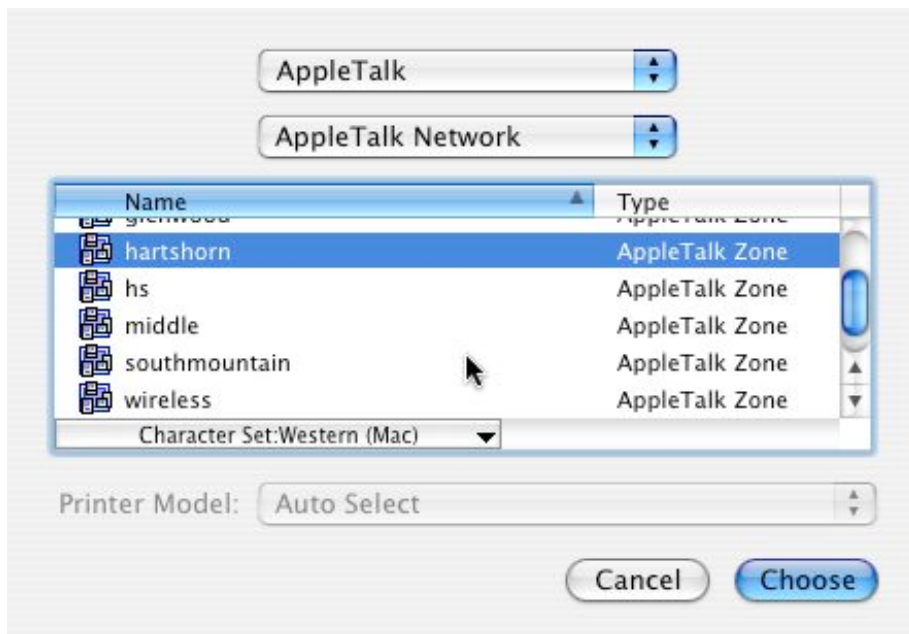
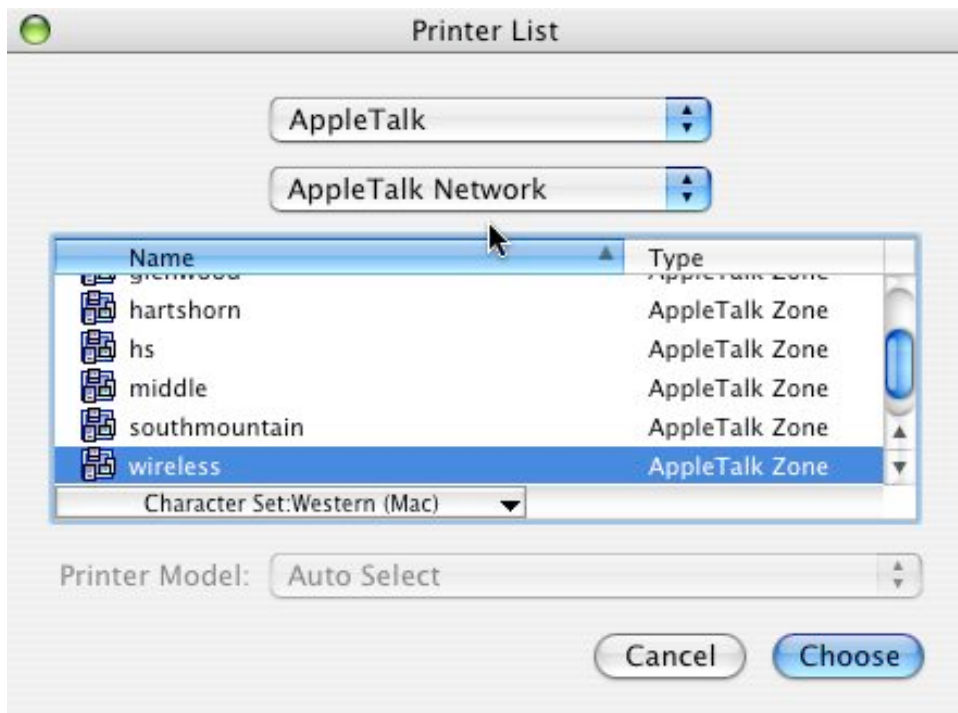
1. Select Print from the File Menu.
2. Select Edit Printer List from the drop down Printer Menu.



3. Click Add Printer.

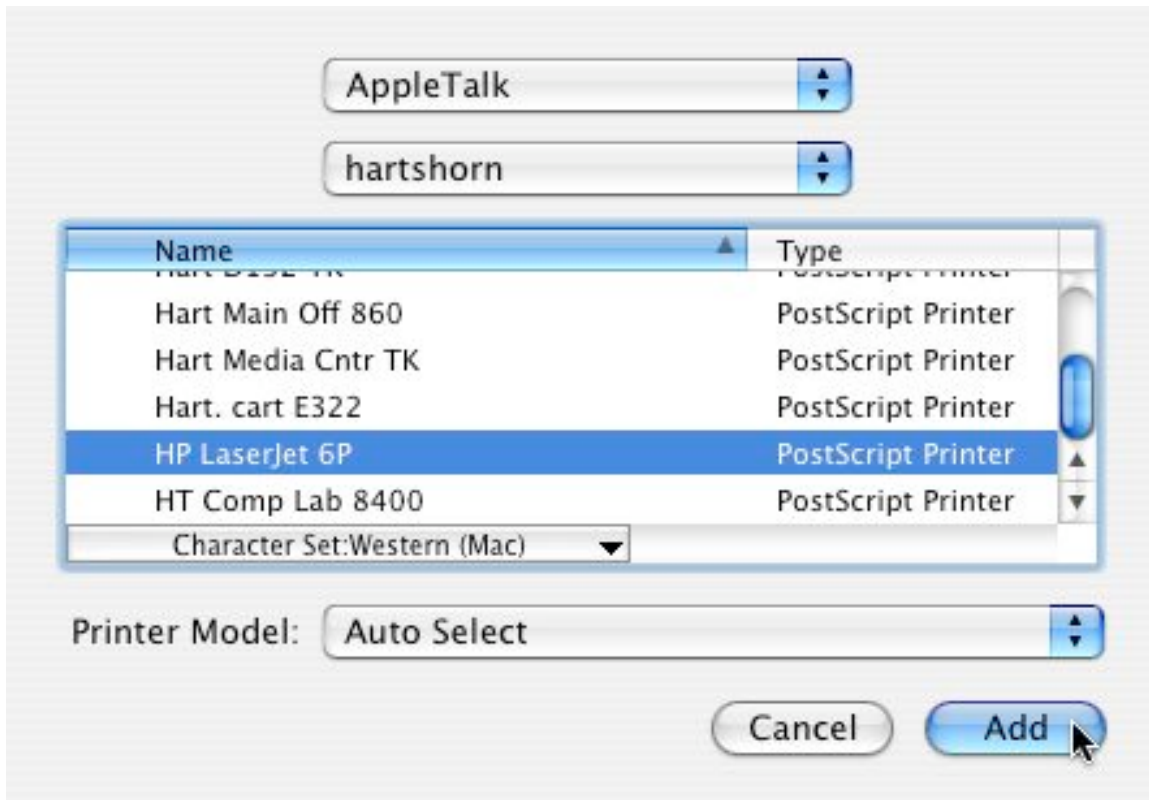


4. Make Sure AppleTalk is selected in both drop-down menus.

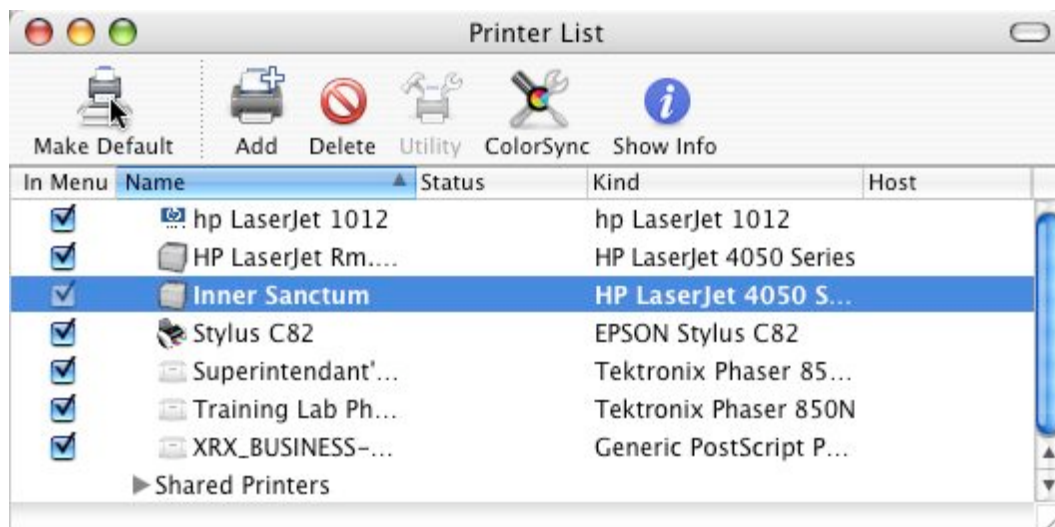


5. Select the printer's zone and click Choose.

6. Select the Printer you wish to add. Click Add.



The printer you selected will be added to your list. This will be your default printer until you go back to Edit Printer List (Step 1). To change the default, highlight a printer and click Make



Default. The default printer's name will appear in bold print. Close the Printer List.